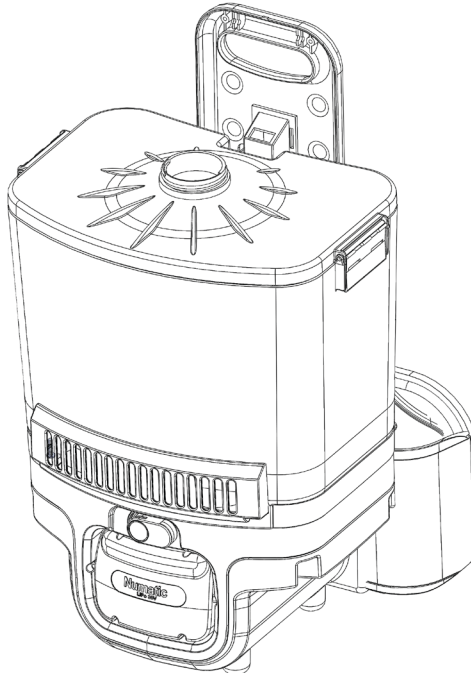


Parish-Supply.com  
Syracuse, NY 315-433-9031  
www.parish-supply.com



# Owner Instructions

Warning! Read instructions before using the machine.



**Model: SSS 1500B** Back Pack Vacuum

# SSS 1500 B Kit - AA30E 607395

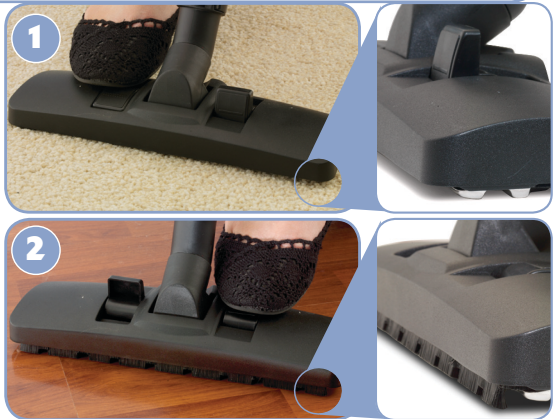
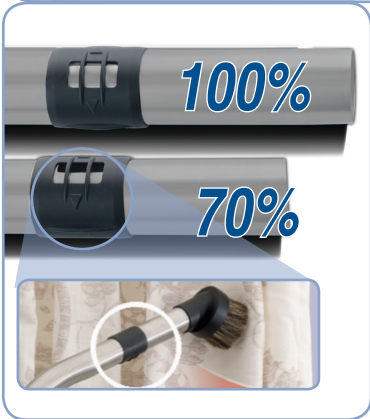
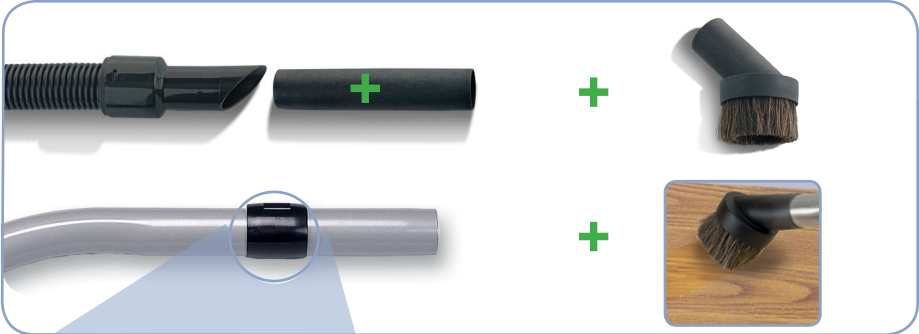


## Assembly





## Using the Machine



Cleaning the machine



## Machine Charging



Cleaning time



=



=



Charge time  
2.5 hours MAX

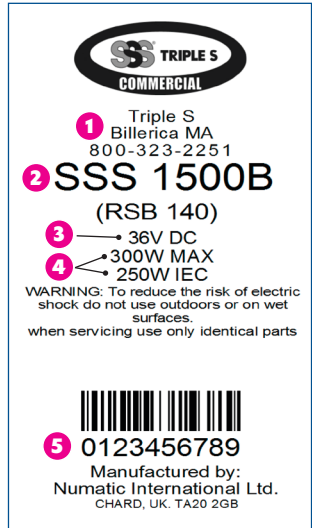
## Rating Label

- 1 Company Name & Address
- 2 Machine Description
- 3 Voltage Frequency
- 4 Power rating
- 5 Machine Serial Number

## Safety Critical Components

Multi-Regional Charger  
(100-240V ~ 50/60Hz)

Li-Po Battery 5.2Ah  
Hepaflo Bag  
Filter



The rating label features the Triple S Commercial logo at the top. Below it, the company name and address are listed: Triple S, Billerica MA, 800-323-2251. The machine model is SSS 1500B (RSB 140). Technical specifications include 36V DC, 300W MAX, and 250W IEC. A warning states: 'WARNING: To reduce the risk of electric shock do not use outdoors or on wet surfaces. when servicing use only identical parts'. A barcode is present with the serial number 0123456789. The manufacturer is identified as Numatic International Ltd., CHARD, UK. TA20 2GB.

### Daily:-

Keep the machine clean, including hoses and tubes.  
Ensure the bag and filter are fitted.  
Regularly examine the charger.  
Check dust bag frequently.  
Check filters are clean.

### Weekly - as daily and:-

Check for any worn or damaged parts and replace immediately.  
Do not steam clean or pressure wash.

### Batteries:-

Always recharge the batteries after use.



## Information for DRY USE Vacuum cleaners



### WARNING

in this respect.

#### **This machine is for DRY USE only.**

You must remove the battery from the machine BEFORE cleaning or maintenance and when replacing parts or converting the machine to another function.

This appliance is intended to be assembled, cleaned and maintained by an adult.

This machine is not suitable for the collection of biological hazards, hazardous or explosive dusts.

Contact your local distributor if you require a machine capable of performing these tasks.

The machine must not be used by persons with reduced physical, sensory or mental capabilities, or lack of experience or knowledge, unless they have been given supervision or instruction.

**This machine is not a toy; children shall not play with this machine.**

#### **Ensure you read the instruction manual before using the machine.**

Operators shall be adequately instructed on the use of these machines, as with all electrical equipment, care and attention must be exercised at all times during use, you must also make certain that routine and preventative maintenance is carried out periodically to ensure safe operation.

Failure to carry out maintenance as necessary, including the replacement of parts to the correct standard could render this equipment unsafe and the manufacturer can accept no responsibility



This machine must not be stored outside, or used in wet environments, or to collect wet materials.

The vacuum cleaner should be stored in a dry place and is for indoor use only.

You must ensure that the filtration system fitted to the machine is suitable for the material being collected.

## NOTES

This product complies with the requirements of CSA / CAN 60335 - 2.69.

This machine is suitable for commercial use, for example in hotels, schools, hospitals, factories, shops and offices for other than normal housekeeping purposes.

If the vacuum cleaner stops working, remove the battery from the machine before investigating where the fault lies.

If the vacuum cleaner has a blockage, switch off, remove the battery from the appliance, and inspect the floor tool, wands and hose for debris. If the floor tool, wands and hose are clear, replace the dust bag and clean the filter.

This machine is equipped with a thermal cut-out to protect the motor and other vital machine parts from overheating.

Should the machine cut-out, it will automatically reset when cooled.

The vacuum cleaner should be inspected after use for damage.

The size and quality of the dust bag and filters affect the machine efficiency.

Use of non-original dust bags or non-original filters can cause restricted air flow which may lead to machine overload.



- Keep your machine clean.
- Fully charge battery before first use.
- Keep filters clean.
- Use filter bags, they will enhance performance and help keep machine clean.
- Keep hoses and tubes clear.
- Replace any worn or damaged parts immediately.
- Change dust bag frequently.
- Keep diffuser filter (where fitted) clean.
- **Remove battery from machine when not in use.**



- Use to suck up hot ashes, lighted cigarette ends or flammable gases.
- Use to vacuum hazardous dust, if you require a machine capable of performing this task, contact your local distributor.
- Use steam cleaners, pressure washers or immerse in water to clean the machine
- Attempt machine maintenance or cleaning unless the battery has been removed from the supply outlet.
- Use in a wet environment or to collect wet materials.
- Store your machine in wet conditions.

## Important Warnings – Batteries

**Read all the warnings before using the battery.**

- The battery is equipped with electronic thermal protection, refer to the **Temperature Range Table** below for recommended operating conditions.
- Do not store batteries along with metal objects due to risk of short circuit.
- This cleaner uses Lithium Polymer (Li-Po) Batteries. Used batteries should be disposed of safely and placed in a sealed plastic bag and then handled according to all locally approved precautions and environmental regulations.
- Do not crush.



- Do not dismantle.
- Do not heat or incinerate the batteries.
- Do not short-circuit the batteries.
- Do not immerse in any liquid.
- Do not charge below 0°C.
- Do not charge damaged batteries.
- Use only (OEM) original equipment manufacturer batteries, when replacement batteries are required.
- If the batteries are leaking, return batteries to a disposal plant or a similar local facility.
- The batteries must be removed from the appliance before the appliance is scrapped.
- The battery is to be disposed of safely and in accordance with all locally approved precautions and environmental regulations.

### Temperature Range Table

Charging	5°C~40°C
Discharging	5°C~45°C
Storage	
< 1 month	5°C~40°C
< 6 months	5°C~35°C



Do not incinerate



Do not immerse or allow to get wet



Caution

If the battery is found to be faulty at any time,  
contact Triple S, or your supplier  
for information on disposal.

## Important Warnings – Charger

**Read all these warnings before using the charger.**

- **CAUTION!** To reduce the risk of injury, charge only Numatic Lithium Polymer (Li-Po) Batteries.  
Other types of batteries may burst causing personal injury and damage.
- Check the mains cord regularly for any sign of damage.
- Do not use damaged devices.
- If the mains cord of the charger is damaged, it must be replaced.
- Protect the charger against moisture and store it in a dry place.
- Do not use the charger if it is wet.
- Do not charge below 0°C.
- The mains voltage available must correspond to the voltage stated on the rating plate of the charger.
- Do not operate charger in explosive environment.
- Do not carry the charger by holding the mains cord.
- Do not handle the electrical cord or plug, with wet hands.
- Do not unplug by pulling on cord. To unplug, grasp the plug, not the cord.
- Do not cover the charger.
- Do not open the charger. Repairs shall be done only by authorised personnel.
- Do not charge damaged batteries.
- Do only charge dry batteries.
- Do not charge non-rechargeable batteries in this charger.
- The appliance is not intended for use by children or infirmed persons without supervision.

## Instructions for Use – Charging Batteries

The charger is intended for use only on flat surfaces, place horizontally on floor or work surface. The charger is intended for use with the detachable power cord supplied, the power unit is capable of operating at different voltages without user adjustment.

If the charger is damaged or does not charge anymore, please return to service centre.

### **Charging Procedure:**

1. Ensure the battery is fully inserted into the charger.
2. Fit the mains power cord to charger and suitable power supply.
3. The LED should show RED to indicate charging.
4. Once fully charged the LED will show GREEN.
5. If power is supplied to the charger with no battery fitted the LED will show GREEN to indicate STAND-BY status.

## Hazards

### **Health Hazards (Acute & Chronic).**

The chemicals used in the battery are in a sealed container.

Risk of exposure only occurs if the battery is abused or damaged.

Contact of electrolyte and lithium with skin and eyes should be avoided.

### **Signs & Symptoms of Exposure.**

A damaged or leaking battery can cause chemical burns upon contact.

## First Aid Measures

If exposed to any of the Chemicals mentioned in the Hazards section please follow the procedures below:

### **Eyes.**

Flush eyes with plenty of water for at least 15 minutes, occasionally lifting the upper and lower eyelid.

Seek medical attention.

### **Skin.**

Remove contaminated clothing and rinse skin with plenty of water or shower for 15 minutes.

Seek medical attention.

### **Inhalation.**

Vacate from site of exposure to fresh air immediately. Use oxygen if available.

### **Ingestion.**

Give at least two glasses of milk or water. Induce vomiting unless patient is unconscious.

Seek medical attention.

### **Note:**

Inhalation, skin contact and eye contact are possible if the battery is damaged.

Exposure to internal contents, the corrosive fumes will be very irritating to skin, eyes and mucous membranes.

Overexposure can cause symptoms of non-fibroid lung injury and membrane irritation.

**Good Batteries...**  
**Good Chargers...**  
**Good Care will ensure**  
**Good Results.**



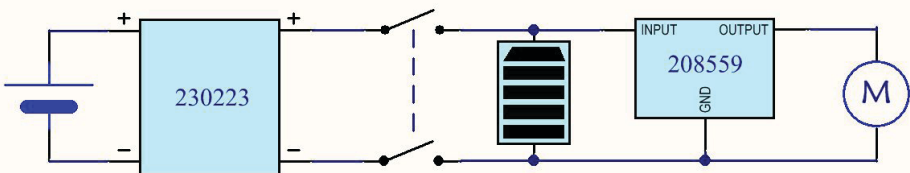
**Data**

Power	Motor	Airflow	Suction
36v (DC)	250W	20 L/s	1000 mbar
Size	Capacity	Weight	Sound Pressure
Width 9.9" Depth 14.2" Height 21.65"	6L	7.3 Kg	65 db (A) (IEC 60704-2-1) Uncertainty 0.2dB
Charge Time	Dust Bag	<b>SSS 1500 B</b>	
3.5 hours	NVM -1CH		

**Spare Parts**

604510	Lithium Polymer Battery
604512	Lithium Polymer Battery X 2
604505	Charger Dock USA
236175	Charger Cable USA
604105	NVM - 1CH HepaFlo Dust bag
604168	TriTex Filter

**Schematic Diagram - DRW-12137 08/11/12 (A01)**



## Warranty Policy – SSS 1500B

The warranty terms outlined below are in lieu of any other warranties, wither stated or implied, included any implied warranty of merchantability, fitness for a particular purpose or otherwise. Under no circumstances will seller be liable for any loss, damage, expense, or consequential damages arising in connection with the use or inability to use this product.

This warranty does not apply to damage or defect caused by accident, misuse, negligence or abuse to any Triple S product which has been serviced by anyone other than a Triple S authorized service representative. Housings or parts that have become damaged as a result of improper use of the machine are excluded from warranty. Refer to the owner's manual for proper machine use and maintenance. Parts that are expected to wear from normal use are not covered under the parts warranty, these include but are not limited to: batteries (6months full coverage); hoses; floor tools; power cords; plugs; filters and switches.

This warranty commences on the date of purchase of the product by the original end user from an authorized Triple S distributor, subject to proof of purchase. If proof of purchase date is unavailable, the warranty begins 90 days after the sale of the product to an authorized Triple S distributor.

- Subject to the conditions outlined above, the manufacturer warrants the tank to be free from defects in materials and workmanship under normal use and service for ten (10) years to the original purchaser.
- Under this warranty, the manufacturer guarantees the performance of all other components to be free from defects for up to two (2) years (6months full coverage on the battery) to the original end user. Parts replaced under this warranty are guaranteed for the remainder of the original warranty period.
- Labour charges are covered for two (2) full years from the date of purchase for Triple S products, provided an authorized Triple S service provider is used for repair. No travel coverage is extended.

Product Exceptions & Exclusions: Battery chargers and all accessories are warranted for one year.

Parish-Supply.com  
Syracuse, NY 315-433-9031  
www.parish-supply.com

