

Get the Cimex Advantage!



Diamond Finisher

Heavy Duty

Cement, marble, terrazzo and stone floor finishing system

A unique finishing system specifically designed for cement, marble, granite, terrazzo and other stone floors, the Cimex CR48 Diamond Finisher allows successive stages of stone floor preparation or restoration to be completed more rapidly and with less effort than is possible with conventional methods.

The Diamond Finishing system combines the unique, patented, Cimex three-headed counter rotating system, with a selection of diamond faced finishing discs, graded from coarse to fine to accommodate newly laid floors, heavily worn or damaged stone or surface repolishing. The generous 6.6 gallon solution tank allows for uninterrupted usage in wet applications.

The unique design of this machine maintains constant pressure and avoids uneven cutting and rotational scoring often found with other floor finishing systems. The counter-rotating head system produces greater stability and eliminates the pulling action of single head machines that can lead to operator fatigue. Less fatigue means greater productivity and reduced labor costs. This machine is so safe and simple to use that even unskilled personnel can produce professional results.

- Heavy-duty purpose designed machine with a superb polishing action.
- Even finish – unique design maintains even pressure, to avoid cutting and scoring.
- Includes one ballast weights (34lbs.) for added pressure. (Additional weights available.)
- Solution delivered through the center of the head reduces splashing and provides even coverage.
- Interchangeable diamond faced finishing discs or bonded abrasives can be fitted to accommodate various stages of floor surfacing.
- High productivity makes optimum use of available labor even with minimal training labor.
- Vacuum port available upon request.



The patented triple-head mechanism incorporates a counter-rotating planetary drive disc. This gives a vigorous action that cleans in all directions allowing for quick and effective finishing and polishing.



We reserve the right to change specifications without prior notification.

Specifications		CR48DF	CR61DF	CR76DF
Motor Power	HP	2	2	2
Head Speed	RPM	880	400	300
Tank Capacity	GALLONS	6.6	6.6	6.6
Working Width	INCHES	19	24	30
Weight	POUNDS	132	180	196
Noise Level	dB(A)	65	65	65
Cable Length	Feet	50	50	50
Head Diameter	INCHES	8	10	12

Parish-Supply.com
Syracuse, NY 315-433-9031
www.parish-supply.com



Parish-Supply.com
Syracuse, NY 315-433-9031
parish-supply.com



Get the Cimex Advantage!

Diamond Finisher

Accessories



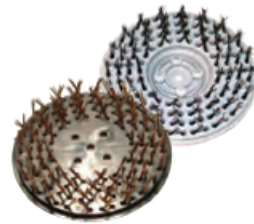
DIAMOND GRINDING BLADES

Blue Quick-Grind Diamond blades - 12, 18, or 28 diamond segments for fast, effective grinding on concrete floors. Used for smoothing rough surfaces or trowel marks, removing thin coatings, leveling high spots, repairing surface damage to concrete slabs, and prepping for coatings, sealers and paints.

Yellow Smooth-Grind Diamond blades - 18 or 28 diamond segments for smooth grinding or polishing of concrete floors. Used for grinding sharp aggregates such as flint and granite, removing surface imperfections from epoxy mortars, and prepping for coatings, sealers and paints.



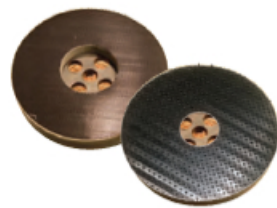
Diamond resin polishing pads - with unique waterway design, 6mm thickness, ranging from 80 to 1500 grit for various stages of surface smoothing and polishing of stone and concrete floors. These tools attach to Velcro drive pads.



Wire scarifying brushes - choice of heavy-duty (2mm) or medium (1.6mm) steel wire, or non-spark (PhosBronze) wire brushes for general scarifying and removal of foam carpet backing, rubber surfaces, impacted grease, oil, wax, food, dried paint, and ice without damage to the substrate.



Carbide scrapers & steel cutter scarifiers - for stripping or scarifying paint, mastics, resins, tar, fiberglass, coatings, industrial buildups, and carpet backing. Scarifier cutters may also be used for light profiling of concrete and steel in preparation for sealants, paint, or other coatings. Replacement steel or TCT cutters and carbide inserts available.



Velcro & Instalock pad drivers - fine tooth, w/foam backing, holds diamond resin pads and other surface preparation tools securely in place and allows them to float over rough surfaces for a superior job. Large tooth Instalock with foam backing holds scrubbing pads of all types firmly in position.



Grit wheels - attach to Velcro pad drivers. For aggressive removal of thin painted surfaces or scuffing concrete or stone surfaces. Various grades available.



SCRUB BRUSHES OF ALL TYPES FOR MILD OR AGGRESSIVE CLEANING & MAINTENANCE

Tynex Abrasive - Nylon bristles impregnated with 80 grit silicon carbide for aggressive stripping and scrubbing on concrete, terrazzo and tile.

Nyhair 75/25 - Used for polishing hard flooring.

Black Nylon w/Diffuser - Long-lasting brush safe for scrubbing on hard flooring or carpeting.

White Nylon - Heavy-duty long-lasting brush safe for scrubbing on hard floor surfaces.

Yellow Polypropylene - For economical general scrubbing, safe for use on most surfaces.



VACUUM ATTACHMENTS & WEIGHTS

VAC 316 Industrial Vacuum - industrial strength vacuum eliminates the mess normally associated with stripping, sanding and grinding. 3 vacuum motors, 13 gal capacity, 16 polyester cartridge filters, external filter shaker, optional wet conversion kit. Comes with 16 1/2 feet of plastic hose and plastic cuff that adapts to either 2" or 3" vac ports on surface prep machines. (See page 13 for more details).



Horseshoe weights - 35 lbs. for 25 and 30 inch Diamond Finisher machines. Weights are stackable; no more than three per machine are recommended.



Sanding Pads - available in a wide range of grits for all types of applications.