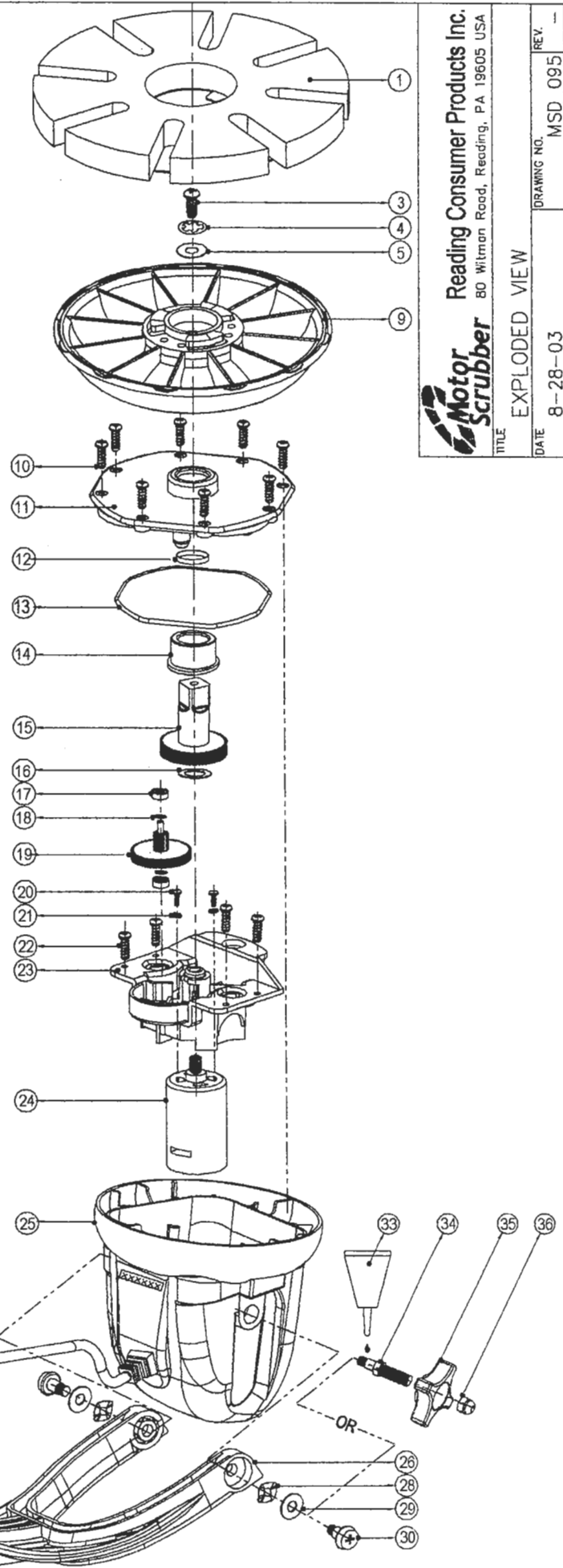


Item	Part Description	Qty	RCP Part No.
1	Disc - Scrub, Fine	1	MS1032
2	Packet - Hardware (Item 3 ~ 6)	1	MS3002
3	Bolt - Hub	1	
4	Washer - Lock, Hub	1	
5	Washer - Plain, Hub	1	
6	Screw - Pole Attachment	2	
7	Handle - 48 Inch, Assembly	1	MS3003
8	Handle - 24 Inch, Assembly	1	*MS3004
9	Hub - Disc Mount	1	MS3001
10	Screw - Motor Housing & Base Plate	8	MSS050
11	Plate - Base	1	MSS051
12	Seal - Shaft, Chuck Gear	1	MSS052
13	Seal - O-Ring, Baseplate/ Housing	1	MSS053
14	Bushing - Chuck Gear, Oil Impregnated	1	MSS054
15	Gear - Chuck, 57 Teeth	1	MSS055
16	Washer - Thrust, Chuck Gear	1	MSS056
17	Bearing - Ball, Sealed, Grease Filled	2	MSS057
18	Washer - Thrust, Combination Gear	2	MSS058
19	Gear - Combination, 11 & 60 Teeth, With Shaft	1	MSS059
20	Screw - Machine, Motor	2	MSS064
21	Washer - Lock, Split, Motor	2	MSS065
22	Screw - Motor Housing & Gear Case	4	MSS066
23	Gear Case	1	MSS067
24	Motor - With Pinion, 11 Teeth	1	MSS068
25	Housing - Motorscrubber, With Cable & Connector	1	MSS069
26	Yoke	1	MS3005
27	Packet - Hardware, Yoke (Item 28 ~ 30)	1	MS3006
28	Washer - Wave, Yoke	2	
29	Washer - Flat, Yoke	2	
30	Bolt - Shoulder, Yoke, Standard	2	
31	Retainer, Cable	1	MSS075
32	Yoke Lock Assembly, Retrofit Kit (Item 33 ~ 36)	1	*MS3025
33	Loctite Tube	1	*MSS063
34	Bolt - Shoulder, Yoke Lock	2	*MSS060
35	Knob - Yoke Lock	2	*MSS061
36	Nut - Acorn, Stainless Steel, Self Lock	2	*MSS062
--	Disc - Sponge, Heavy Duty	--	*MS1030
--	Disc - Abrasive, Coarse	--	MS1034
--	Disc - Brush	--	MS1038
--	Brush - Aggressive Duty	--	*MS1039
--	Applicator - Wax	--	*MS1040
--	Bonnet - Terry Cloth	--	*MS1042
--	Brush - Long Bristle	--	*MS1044
--	Holder - Backing Pad	--	*MS1046
--	Bonnet - Microfiber, Thick	--	*MS1050
--	Bonnet - Microfiber, Thin	--	*MS1052

Notes:

1. The part number for the complete Motorscrubber Housing, less Pole and Hub is MS3000.
2. An asterisk (*) in the Parts List denotes Accessory items that are not included with the basic Motorscrubber Kit. These items can be ordered separately. Ask for the Accessory Brochure.
3. A high quality grease is applied to the gear train. The ball bearings are prepacked with grease and sealed.
4. Loctite is used to secure the Yoke Shoulder Bolts, Parts 30 and 34.



Motor Scrubber
 Reading Consumer Products Inc.
 80 Witman Road, Reading, PA 19605 USA

TITLE EXPLODED VIEW
 DATE 8-28-03
 DRAWING NO. MSD_095
 REV. --