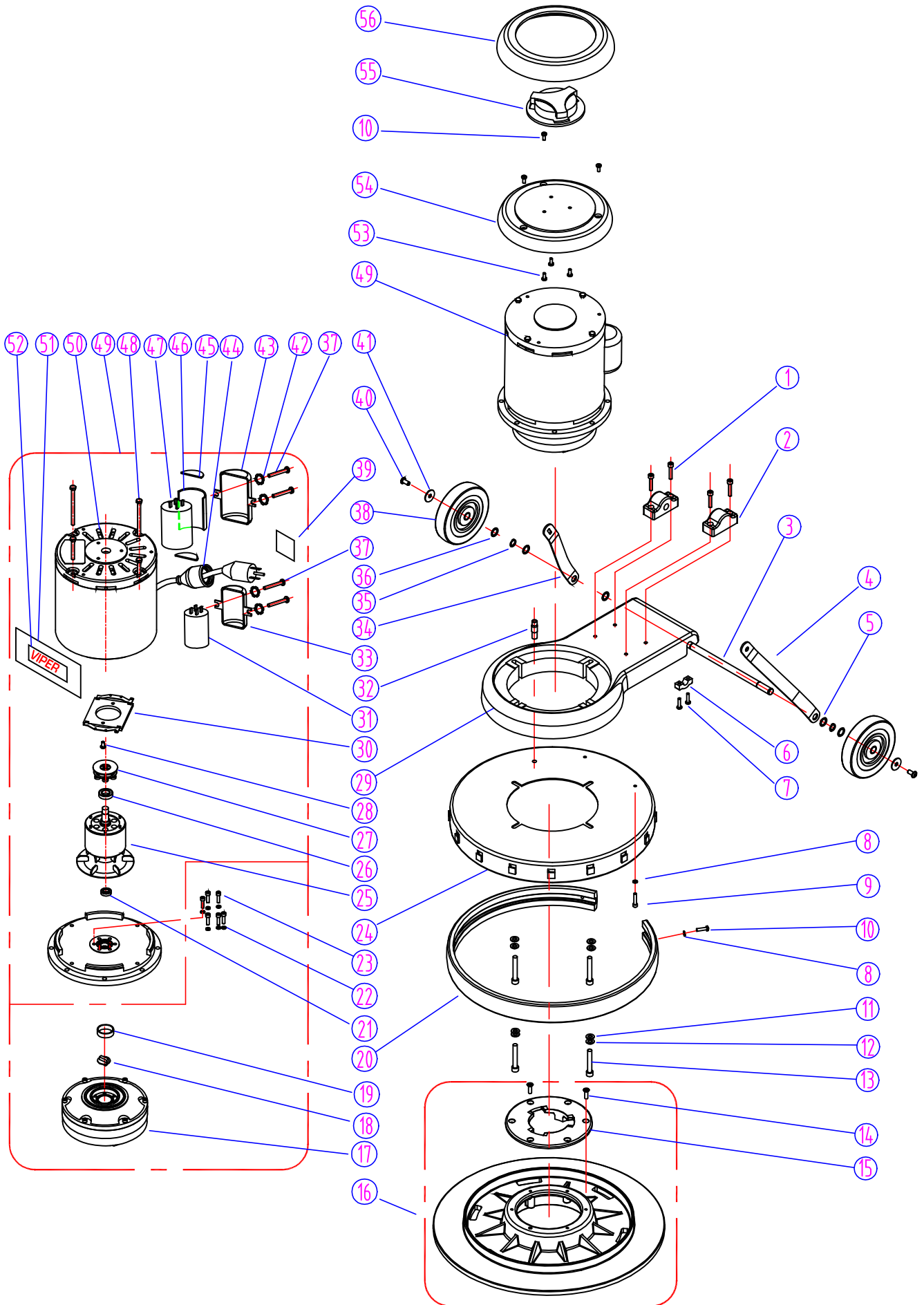


BASE GROUP FOR VN1715 & VN2015



**BASE ASSEMBLY - VN1715 & VN2015 - LIST PRICE**

DIA NO	PART NUMBER	DESCRIPTION	NO REQ'D	LIST \$ (ea)
1	GT13080	SCREW, M6 X 30	4	\$1.13
2	VF30011	CLAMP BLOCK, HANDLE	1	\$7.75
3	VF30026	AXLE	1	\$10.50
4	VF30020	BRACKET, LEFT HANDLE	1	\$21.00
5	VV20274	WASHER, PLAIN, M13	4	\$2.38
6	GV40235	CLAMP BLOCK, AXLE	2	\$1.88
7	VV13621	SCREW, SELF-TAPPING, M5 X 20	4	\$1.13
8	VF13474A	WASHER, PLAIN, M5	4	\$1.13
9	VF13613	SCREW, M5 X 20	2	\$1.13
10	VA13474	SCREW, M5 X 16	5	\$1.13
11	VF13524	WASHER, PLAIN, M8	4	\$1.13
12	VF13519	WASHER, LOCK, M8	4	\$1.13
13	GT13016	SCREW, M8 X 55	4	\$1.13
14	MF-VF002-4A	SCREW, SELF-TAPPING, 1/4"-1"	6	\$1.13
15	MF-VF002-2	CLUTCH PLATE	1	\$20.25
16	MF-VF022	PAD HOLDER, 19-INCH, (VN2015)	1	\$96.25
	MF-VF021	PAD HOLDER, 16-INCH, (VN17105)	1	\$74.75
17	VF999802B	GEAR BOX	1	\$354.75
18	VF99021	COUPLER	1	\$10.00
19	MT01102	SLEEVE	1	\$2.50
20	VF30004	BUMPER, 20-INCH, (VN2015)	1	\$11.00
	VF30005	BUMPER, 17-INCH, (VN1715)	1	\$10.50
21	VF999821	BEARING, 6002 LLU	1	\$24.50
22	VV13601	WASHER, LOCK, M5	6	\$1.13
23	VV13636	SCREW, M5 X 30	6	\$1.13
24	VF30006	SHROUD, 20-INCH, (VN2015)	1	\$68.75
	VF30006A	SHROUD & BUMPER ASSY, 20-INCH	1	\$79.75
	VF30007	SHROUD, 17-INCH, (VN1715)	1	\$55.00
	VF30007A	SHROUD & BUMPER ASSY, 17-INCH	1	\$66.00
	VF30024A	SHROUD & BUMPER ASSY, 15-INCH (OPTIONAL)	0	\$53.63
	VF30023A	SHROUD & BUMPER ASSY, 13-INCH (OPTIONAL)	0	\$45.50
25	YCQ11200	ROTOR WITH FAN ASSY	1	\$128.00
26	YCQ10501	BEARING, 6203 RZ	1	\$23.13
27	YCQ10300A	CENTRIFUGAL SWITCH (VN1715 up to serial #1616 & VN2015 up to serial # 5766)	1	\$14.13
	YCQ12301	CENTRIFUGAL SWITCH (VN1715 serial #1617 + & VN2015 serial # 5767 +)	1	\$19.50
28	VV20509	SCREW, M5 X 10	2	\$1.13
29	VF30008	ALUMINIUM BASE, MOTOR	1	\$68.75
30	YCQ10300B	STATIONARY SWITCH (VN1715 up to serial #1616 & VN2015 up to serial # 5766)	1	\$23.38
	YCQ12302	STATIONARY SWITCH (VN1715 serial #1617 + & VN2015 serial # 5767 +)	1	\$26.00
31	VF999854	CAPACITOR, RUN, 50uF / 250V	1	\$29.63
32	VF40152	HOSE BARB	1	\$4.75
33	YLQ14601	MOUNTING FRAME, CAPACITOR, (SMALL)	1	\$10.88
34	VF30019	BRACKET, HANDLE, RIGHT	1	\$21.00
35	VF13520	WASHER, LOCK	2	\$1.13
36	VF50119	WASHER, PLAIN, M12	2	\$1.13
37	VF14214	SCREW, M5 X 8	4	\$1.13
38	VF48202	WHEEL, 5"	2	\$22.00
39	VF40994	LABEL, READ MANUAL	1	\$1.13
40	VF44012	SCREW, M6 X 12.7	2	\$1.13
41	VF13666	WASHER, M6	2	\$1.13
42	VF13604	WASHER, LOCK, EXTERNAL TOOTH	4	\$1.13
43	YCQ10615	MOUNTING FRAME, CAPACITOR, (LARGE)	1	\$12.38

DIA NO	PART NUMBER	DESCRIPTION	NO REQ'D	LIST \$ (ea)
44	AS41902	PLUG PROTECTOR, LARGE FEMALE	1	\$6.25
45	VF999805	CAPACITOR, START, 400-450UF / 150V, (LARGE)	1	\$28.75
46	YCQ10414	CLEAR COVER	4	\$1.13
47	YCQ10416	CAPACITOR WRAP	2	\$1.38
48	YLQ17507	BOLT ASSY	4	\$2.13
49		SEE #17 & #46		
50	VF999787	MOTOR, 110V, 1.5HP	1	\$464.75
51	VF44003	LABEL, MOTOR	1	\$15.75
52	VF41079	LABEL, VIPER	1	\$13.00
53	VF14222	SCREW, M5 X 12	3	\$1.13
54	VF30001	TOP COVER, MOTOR	1	\$23.00
55	VF30002	CLUTCH PLATE	1	\$10.50
56	VF47023	BUMPER	1	\$10.50



## HANDLE ASSEMBLY - VN1715 & VN2015

DIA NO	PART NUMBER	DESCRIPTION	NO REQ'D	LIST \$ (ea)
1	VF30016	HANDLE RELEASE	1	\$26.75
2	VF30015	BOLT, HANDLE RELEASE	1	\$10.50
3	VF30018	WASHER, PLAIN	2	\$1.25
4	VF13503	NUT, LOCK, M8 X 5.7	1	\$1.13
5	VF30017	SCREW	1	\$1.50
6	VF30014	COVER, HOOK	1	\$10.88
7	VF45120	CORD, HANDLE	1	\$6.25
8	AS41901	PLUG PROTECTOR, SMALL MALE	1	\$6.25
9	VF50120	GROMMET	1	\$1.13
10	VF13504	NUT, LOCK, M10	1	\$1.13
11	VF13517	WASHER, PLAIN	1	\$1.13
12	VF14114	SCREW, M8 X 55	1	\$2.00
13	VF30013	HOOK, CORD	1	\$21.50
14	VF13493	SCREW, M6 X 10	1	\$1.13
15	AS112205	TUBE	1	\$37.13
16	VF44018	LEVER, SOLUTION	1	\$11.63
17	VV13661	SCREW, M4 X 12	2	\$1.13
18	VF48306	PIN	3	\$1.50
19	VF44016	TRIGGER, LEFT, SWITCH	1	\$11.63
20	VF45119	CORD, POWER SUPPLY	1	\$71.50
21	AS22009	STRAIN RELIEF, CORD	1	\$13.00
22	VF30108	GASKET, HANDLE, SOLUTION	1	\$1.88
23	VF14223	SCREW, M6 X 25	2	\$1.13
24	VF14218	SCREW, M6 X 45	2	\$1.13
25	VF13528	TOOTH WASHER, M6	2	\$1.13
26	VF30102	REAR COVER, SWITCH HOUSING	1	\$71.00
27	VF99010C	CIRCUIT BREAKER, 17A	1	\$10.88
28	VF30109	COVER	1	\$1.88
29	GT13013	NUT, M4	3	\$1.13
30	VF48309	CLAMP, BLOCK	1	\$2.63
31	VF44017	TRIGGER, RIGHT, SWITCH	1	\$11.63
32	VF44203	SWITCH ASSEMBLY	1	\$23.50
33	VF14212	SCREW, M3 X 25	2	\$1.13
34	VF13527	TOOTH WASHER, M4	1	\$1.13
35	VF13526	SCREW, M4 X 30	1	\$1.13
36	VF46705	SAFETY BUTTON	1	\$5.25
37	GV40218	SPRING, SAFETY BUTTON	1	\$1.50
38	VF48310	HANDLE GRIP	2	\$10.88
39	VF30101	FRONT COVER, SWITCH HOUSING	1	\$67.00
40	VF47035A	LOGO	1	\$5.50
41	VF13604	TOOTH WASHER, M5	4	\$1.13
42	VF14222	SCREW, M5 X 12	4	\$1.13

