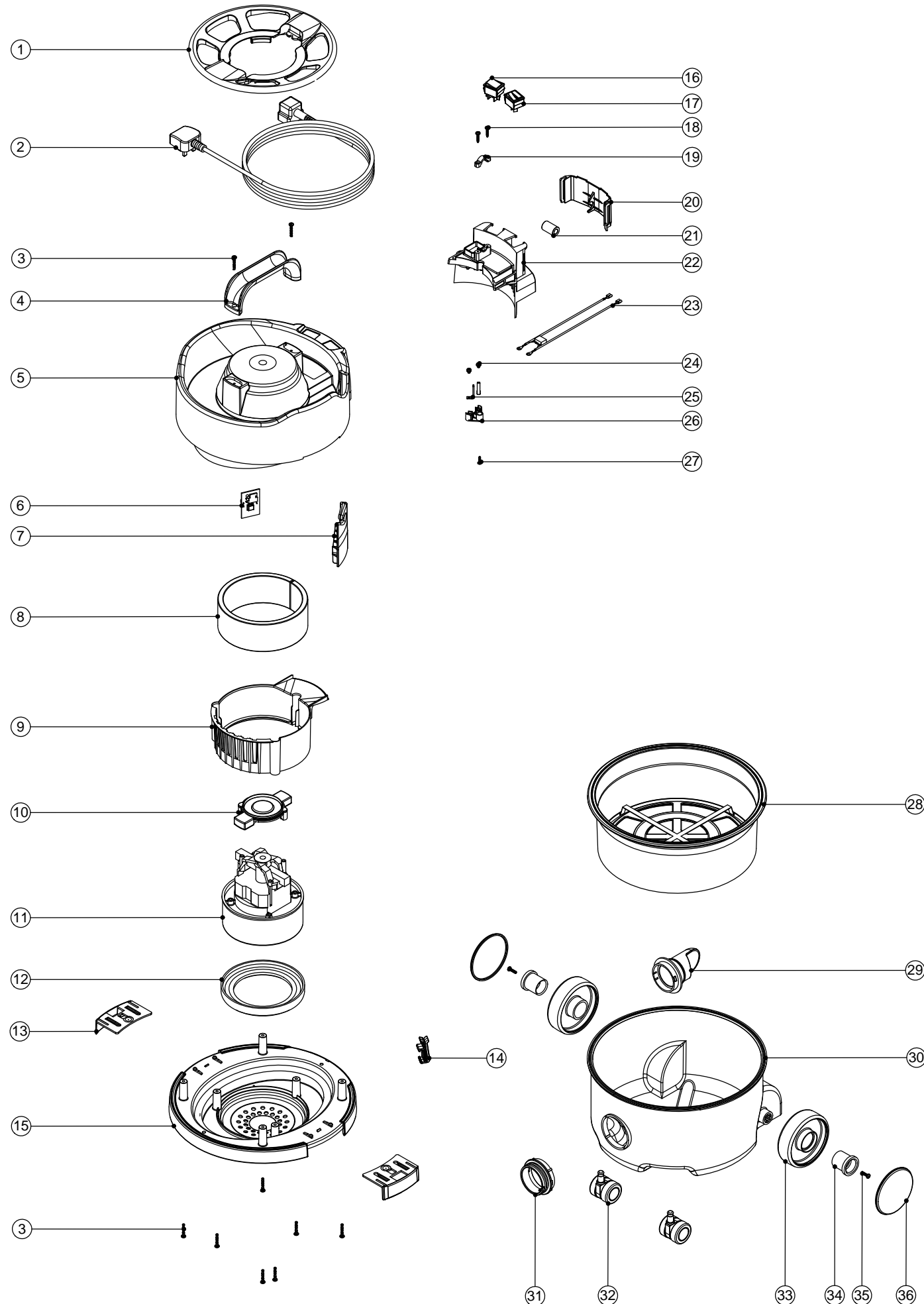


# Numatic International Spare Parts

**Model No:** PSP180A / 200A / 370A MID BLUE EXPLODED DRAWING

234771  
DRAWING: DRW-6776 ISS:A01  
11/10/2010

NB: FOR WIRING SEE DRAWING: DRW-4550



# Numatic International Spare Parts

**Model No:** PSP180A / 200A / 370A MID BLUE EXPLODED DRAWING

| POS | ITEM NO: | DESCRIPTION   | COMMENTS           |
|-----|----------|---|--------------------|
| 1   | 237098   | NSP / PSP CABLE TIDY (MID BLUE)   |                    |
| 2   | 236009   | 10.0M X 1.00MM X 2 CORE CABLE (SOCKET + PLUG) UK  |                    |
|     | 236013   | 10.0M X 1.00MM X 2 CORE CABLE (SOCKET + PLUG) EURO  |                    |
|     | 236017   | 10.0M X 1.00MM X 2 CORE CABLE (SOCKET + PLUG) SWISS                                       |                    |
|     | 236021   | 10.0M X 1.00MM X 2 CORE CABLE (SOCKET + PLUG) SOUTH AFRICA                                |                    |
|     | 236025   | 10.0M X 18AWG X 2 CORE YELLOW CABLE (SOCKET + PLUG) CSA                                   | CSA MACHINES       |
|     | 236029   | 10.0M X 1.00MM X 2 CORE CABLE (SOCKET + PLUG) AUSTRALIAN                                  |                    |
| 3   | 219104   | No8 X 1 INCH LONG POZI PAN PLASTITE SCREW   |                    |
| 4   | 206451   | HANDLE  |                    |
| 5   | 325921   | NSP / PSP TOP MOTOR HOUSING (MID BLUE) PRINTED BLACK NUMATIC + AUTOSAVE GREEN FLOWER LOGO |                    |
| 6   | 208100   | AUTOSAVE 2 SPEED CONTROL PCB  |                    |
| 7   | 237079   | CABLE EXIT NPV/NHV  |                    |
| 8   | 203020   | POD SIDE FELT   |                    |
| 9   | 229621   | AIR GUIDE   |                    |
| 10  | 229614   | MOTOR PLATE BI -MATERIAL  |                    |
| 11  | 205403   | 240V 2 STAGE THRO FLOW TAPER FAN MOTOR (DL21102T) TCO (MARKED 230V)                       |                    |
|     | 205402   | 220V 2 STAGE THRO FLOW TAPER FAN MOTOR (DL21102T) TCO (MARKED 230V)                       |                    |
|     | 205401   | 120V 2 STAGE THRO FLOW TAPER FAN MOTOR (DL21101) TCO                                      |                    |
| 12  | 227882   | BOTTOM MOTOR GASKET   |                    |
| 13  | 229715   | TOGGLE (TWIN SHOT)  |                    |
| 14  | 229426   | HENRY CLIPHOLDER  |                    |
| 15  | 229618   | BOTTOM MOTOR HOUSING (TWIN-SHOT)  |                    |
| 16  | 220243   | BLACK/GREEN ROCKER SWITCH   |                    |
| 17  | 221102   | RED MOMENTARY ROCKER SWITCH (BLACK BODY / RED ILLUMINATION WINDOW)                        |                    |
| 18  | 219107   | No6 X 5/8 INCH LONG POZI PAN PLASTITE SCREW   |                    |
| 19  | 227564   | PLUG LOCATION CLAMP   |                    |
| 20  | 229623   | SWITCH COVER  |                    |
|     | 229738   | SWITCH COVER V2   | CSA MACHINES       |
| 21  | 230097   | AXIAL FERRITE BEAD  |                    |
| 22  | 237076   | SWITCH HOUSING PLUGGED  |                    |
|     | 237172   | SWITCH HOUSING PLUGGED V2   | CSA MACHINES       |
| 23  | 230170   | SUPPRESSOR WIRE ASSY NPV/NHV  |                    |
| 24  | 219090   | M4 X 8MM LONG POZI PAN SEMS SCREW   |                    |
| 25  | 206562   | CONTACT PIN   |                    |
| 26  | 325912   | NPV / NHV TERMINAL BLOCK PLUS INSERTS   |                    |
| 27  | 219318   | No6 X 1/2 INCH LONG POZI PAN PLASTITE SCREW   |                    |
| 28  | 207109   | 12 INCH FILTER (DOUBLE BOTTOM) 160GRM SMS   |                    |
| 29  | 227363   | BAG CONNECTOR   | 180 MACHINES       |
|     | 229768   | BAG CONNECTOR (2006)  | 200 MACHINES       |
| 30  | 227575   | 180 DRUM - MID-BLUE   |                    |
|     | 237126   | 180 DRUM PLUS FACE - MID BLUE   |                    |
|     | 227374   | NNV/NRV 200 (MID BLUE) MOULDED DRUM   |                    |
|     | 229742   | NNV/NRV 200 (MID BLUE) MOULDED DRUM PLUS FACE   |                    |
|     | 227457   | 370 DRUM (MID BLUE) LOOSE NECK  |                    |
|     | 237127   | 370 DRUM (MID BLUE) LOOSE NECK PLUS FACE  |                    |
| 31  | 237108   | MID BLUE THREADED NECK  | 180 / 370 MACHINES |
| 32  | 204000   | 40MM PU-TYRED BLACK TWIN WHEEL CASTOR   |                    |
| 33  | 227640   | 2 SHOT WHEEL ASSEMBLY   |                    |
| 34  | 227868   | WHEEL HUB FOR 2 SHOT WHEEL  |                    |
| 35  | 219105   | No8 X 5/8 INCH LONG POZI PAN PLASTITE SCREW   |                    |
| 36  | 229777   | MID BLUE TRIM   |                    |